

FEBRUARY PROGRAMME

We hope to see you at some of our creative arts events. If you need **help with a lift**, please see notes & contact details on the back page.

Monday 3rd February
Patchwork Group

Bank House, St Ed. St
10.30am – 12.30pm

Monday 3rd February
Trustees' meeting

Bank House, St Ed. St
7.30pm – 9.30pm

Tuesday 4th February
Creative Writing group – Sarah
Creative Space: **Andy**
#TheGreatBritishValentine project

Bank House, St Ed. St
10.30am - 12.30pm
1.30pm – 3.30pm

Thursday 6th February
Self-help art group

Bank House, St Ed. St
10.30am – 12.30pm

Monday 10th February
Patchwork Group

Bank House, St Ed. St
10.30am – 12.30pm

Tuesday 11th February
Creative Writing group – Sarah
Creative Space: **Gavin Bower (1)**
Collage – inspired by **Frida Kahlo** images

Bank House, St Ed. St
10.30am - 12.30pm
1.30pm – 3.30pm

Thursday 13th February
Self-help art group

Bank House, St Ed. St
10.30am – 12.30pm

Monday 17th February
Patchwork Group

Bank House, St Ed. St
10.30am – 12.30pm

Tuesday 18th February
Creative Writing group – Sarah
Creative Space: **Gavin (2)** continues

Bank House, St Ed. St
10.30am - 12.30pm
1.30pm – 3.30pm

Thursday 20th February
Self-help art group

Bank House, St Ed. St
10.30am – 12.30pm

Monday 24th February
Patchwork Group

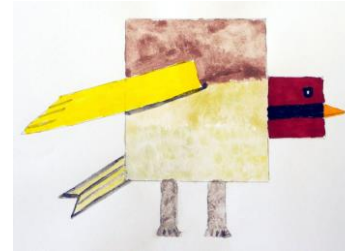
Bank House, St Ed. St
10.30am – 12.30pm

Tuesday 25th February
Creative Writing group – Andy
Creative Space: **Gavin (3)**
Collage – inspired by **Frida Kahlo** images

Bank House, St Ed. St
10.30am - 12.30pm
1.30pm – 3.30pm

Thursday 27th February
Self-help art group

Bank House, St Ed. St
10.30am – 12.30pm



Birds
from observation to abstraction
Brilliant observational drawings and abstract images based on them.



FEBRUARY PROGRAMME DETAILS

Our Home Base is currently supported by:

You

Borderland Voices is immensely grateful for individual donations, large and small, and for the regular contributions which participants make each week. Until we can bring in more grant money, **your support is helping to keep our services going.**

Creative Writing on Tuesday mornings is currently supported by the **Leek Town Lands Trust + a small grant from Cllr Lytton Page**. It's facilitated by various people. **Sarah** and **Andy** lead the February sessions. This very supportive group welcomes anyone interested in words.

Creative Space on Tuesday afternoon, again currently funded by the **Leek Town Lands Trust**, is a chance to experiment. **Andy's** 1st session is a national project to make/share Valentine's cards. Then we welcome back **Gavin Bowyer** for 3 sessions which will involve **collage** inspired by the images of **Frida Kahlo**.

A small **self-help, DIY art group** meets at BV on **Thursdays 10.30-12.30**. Either use BV materials or bring your own. Drinks & biscuits provided.

Contact details:

Bank House, 20 St Edward St
Leek, ST13 5DS



Phone 01538 528708

Email: info@borderlandvoices.org.uk

Website: www.borderlandvoices.org.uk

Borderland Voices contact **Andy Collins**

Borderland Voices

21 years of arts for mental wellbeing



**The Queen's Award
for Voluntary Service**

Newsletter

FEBRUARY 2020

I'm delighted to report that **our Chairman Bob** has had his operation and has made an excellent recovery.

Which leads neatly to the **Trustees' Meeting on Monday 3rd February**. If you want to raise anything, do speak to **Mark, Bill or Paul** (or indeed Andy).

Self-help art group: Thurs 10.30-12.30. All welcome.

We've been awarded £1,000 of **Celebrate 25 Lottery** funding (marking its 25th anniversary). Although this sounds a lot, it's quite ring-fenced. It will fund **4 visits** (with **2 artists on each occasion**) in conjunction with other groups. So think about **places you'd like to go** and **groups we might join up with**.

We've received a small Cllr's Community Initiative Fund grant from **Cllr Lytton Page** (Leek North).

We welcome back **Gavin Bowyer** for more art workshops.