

NOVEMBER PROGRAMME

We hope to see you at some of our creative arts events. If you need **help with a lift**, please see notes & contact details on the back page.

Monday 6th November
Patchwork Group

57 Queens Drive
10.30am – 12.30pm

Tuesday 7th November
Creative Writing group – Alison
Creative Space: **Pauline**
Design a **poster** to highlight medicine wastage

57 Queens Drive
10.30am - 12.30pm
1.30pm – 3.30pm

Monday 13th November
Patchwork Group

57 Queens Drive
10.30am – 12.30pm

Tuesday 14th November (to 6th January)
J. R. R. Tolkien in Staffordshire Exhibition, focused on his time in Staffordshire during WWI.

Leek Library
usual opening hours

Tuesday 14th November
Creative Writing group – Alison
Creative Space: **Sarah (1)**
Prepare for **Christmas** with a **card** design

57 Queens Drive
10.30am - 12.30pm
1.30pm – 3.30pm

Monday 20th November
Patchwork Group

57 Queens Drive
10.30am – 12.30pm

Tuesday 21st November
Creative Writing group – Alison
Creative Space: **Sarah (2)**
Prepare for **Christmas** with a **card** design

57 Queens Drive
10.30am - 12.30pm
1.30pm – 3.30pm

Monday 27th November
Patchwork Group

57 Queens Drive
10.30am – 12.30pm

Tuesday 28th November
Creative Writing group – Mary
Creative Space: **Sarah (3)**
Prepare for **Christmas** with a **card** design

57 Queens Drive
10.30am - 12.30pm
1.30pm – 3.30pm

Advance warning:

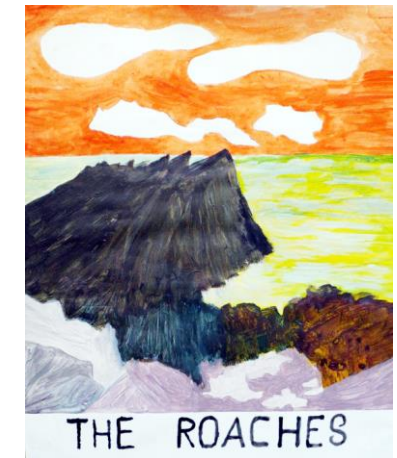
Tuesday 12th December
BV Christmas lunch, please book a.s.a.p.

Tittesworth
12.45 for 1.00pm



Classic posters – Welcome to the Borderlands

Ruby introduced a new way of painting landscapes (specifically those of the Staffordshire Moorlands). She encouraged people to combine the graphic style of classic British Rail travel posters with Japanese 'flattened colour' landscape art, which often uses non-natural colours to heighten the effect. Here are some of the results.



Move plans

As everyone will now know, we must shortly leave 57 Queens Drive which, thanks to Your Moorlands, we've used rent-free until now. We've gratefully accepted new premises at a low rent with Support Staffs. (Bank House) & should complete the move by December.

NOVEMBER PROGRAMME DETAILS



Creative Writing, which takes place on Tuesday mornings, is currently supported by the People Power Fund & is facilitated both by professional writers & BV participants. **Alison** returns to lead 3 workshops, with **Mary** taking the other. This very supportive group welcomes anyone interested in words.

Creative Space on Tuesday afternoon, currently funded by the Silver Social Action Fund via the Staffs Community Foundation, is a chance to experiment. **Pauline** looks at posters to promote awareness of medicine wastage. **Sarah** helps with Christmas card design, as the festive season approaches.



No formal **DIY sessions** this month as Andy prepares for our move but you can arrange with her to come at any time to use the space & materials.



BV Home Base supported by:

Contact details:

57 Queen's Drive, Leek, ST13 6QF

Phone 01538 528708

Email info@borderlandvoices.org.uk

Website www.borderlandvoices.org.uk

Borderland Voices contact Andy Collins



Borderland Voices



The Queen's Award for Voluntary Service

Newsletter

NOVEMBER 2017

All BV activities will continue at Queens Drive until the end of November. We'll start moving materials etc. throughout the month & various people have kindly offered the use of vehicles & containers.

We should be in our new venue (Bank House, Leek) by December. We'll explain where it is to anyone not familiar with the centre of Leek.

See some **Classic moorlands posters** inside.

If you'd like **Xmas lunch** (12 Dec.) please contact Andy a.s.a.p.

We expect to receive over £600 from the **Co-op Community Fund** very soon.

Police & Crime Commissioner Matthew Ellis visited in October. One of his funds currently supports the **Writing Group**.