

SEPTEMBER PROGRAMME

We hope to see you at some of our creative arts events. If you need **help with a lift**, please see notes & contact details on the back page.

Tuesday 3rd September

Creative Writing group – Sarah

Creative Space: **Sheena (1)**

Greece – landscape of legends

Bank House, St Ed. St

10.30am - 12.30pm

1.30pm – 3.30pm

Thursday 5th September

Self-help art group

Bank House, St Ed. St

10.30am – 12.30pm

Monday 9th September

Patchwork Group

Bank House, St Ed. St

10.30am – 12.30pm

Monday 9th September onwards

Repair work to flat roof – expect noise.

Bank House, St Ed. St

Tuesday 10th September

Creative Writing group – Andy

Creative Space: **Sheena (2)**

Greece – landscape of legends

Bank House, St Ed. St

10.30am - 12.30pm

1.30pm – 3.30pm

Thursday 12th September

Self-help art group

Bank House, St Ed. St

10.30am – 12.30pm

Monday 16th September

Patchwork Group

Bank House, St Ed. St

10.30am – 12.30pm

Tuesday 17th September

Creative Writing group – Sarah

Creative Space: **Sheena (3)**

Greece – landscape of legends

Bank House, St Ed. St

10.30am - 12.30pm

1.30pm – 3.30pm

Thursday 19th September

Self-help art group

Bank House, St Ed. St

10.30am – 12.30pm

Monday 23rd September

Patchwork Group

Bank House, St Ed. St

10.30am – 12.30pm

Tuesday 24th September

Creative Writing group – Sarah

Creative Space: **Andy**

Catch-up

Bank House, St Ed. St

10.30am - 12.30pm

1.30pm – 3.30pm

Thursday 26th September

Self-help art group

Bank House, St Ed. St

10.30am – 12.30pm



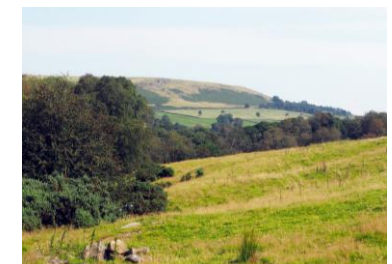
Abstract Still Life

Folk tackled this brief in a wide range of styles, media & colours.



Visit to Back Dane Cottage

After two failed attempts to hold a BBQ at Bob's house, we finally succeeded on our visit to this beautiful 'new' venue near Wincle. While the writing group worked in a spacious room overlooking Shutlingsloe, others lit the BBQ & all enjoyed stunning views up towards Gradbach.



SEPTEMBER PROGRAMME DETAILS



Creative Writing (Tues. mornings) is supported by the sponsored abseil undertaken by Richard & co. It's facilitated by various people. **Sarah & Andy** lead this month's sessions. This very supportive group welcomes anyone interested in words.

Creative Space on Tuesday afternoon, again currently funded by the efforts of the abseil team, is a chance to experiment. **Sheena**, who's just had a summer holiday in Greece, leads 3 sessions entitled **Greece – landscape of legends**. **Andy** rounds off with a catch-up session.

A small **self-help, DIY art group** meets at BV on **Thursdays 10.30-12.30**. Either use BV materials or bring your own. Drinks & biscuits provided.

BV Home Base supported by >>>



Contact details:

Bank House, 20 St Edward St
Leek, ST13 5DS

Phone **01538 528708**

Email: info@borderlandvoices.org.uk

Website: www.borderlandvoices.org.uk

Borderland Voices contact **Andy Collins**



Leek Town Lands

**Staffordshire
Provincial Grand Lodge**



Borderland Voices

21 years of arts for mental wellbeing



**The Queen's Award
for Voluntary Service**

Newsletter

SEPTEMBER 2019

In view of the lack of attendees, **Richard** is discontinuing his **photography group**. We thank him for giving this another go. He has however indicated that anyone wanting help or advice with their photography can talk to him on an ad hoc basis.

Back Dane Cottage is a stunning location & was bathed in sunshine for our visit, once everyone found it. For the BBQ it was 3rd time lucky. **Thanks to all** for making it a great day.

As you can see inside, people responded magnificently to the **'Abstract Still Life'** challenge. They interpreted the jug, seed heads, glass containers, stoneware bottle, apples & shells in a fascinating range of ways.

Repair work on the (leaking) flat roof over Andy's office & Juniper's premises beyond starts this month. **Be prepared for some noise** & possibly disruption. Andy will work with our landlords, Support Staffordshire, to minimise this.